



FOR SALE

143 North Street, Romford, RM1

Site Description

The development site comprises a number of industrial units on a fairly irregular shaped plot comprising 0.29 hectares (0.71 acres).

Planning Proposal

Construction of 40 No flats in two Blocks with parking and landscaping.

3 x 1 Beds @ 50 sq ft

13 x 2 Beds @ 63 sq ft

24 x 2 Beds @ 76 sq ft

Total of 40 Units

No affordable provision

Approx. 30,000ft sq

Location

Romford is the Major commercial and administrative centre of the London Borough of Havering. Situated to the north-east of Central London.

Romford has increased in popularity as a residential location in recent years, which has given rise to the construction of a number of new build speculative residential schemes which have either been recently completed, currently under construction or planned to commence in the near future.

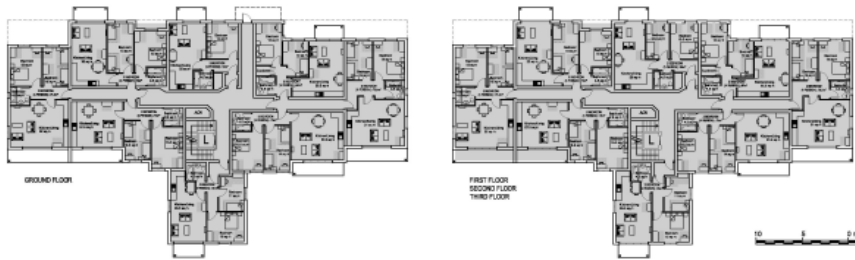
Transportation

Road communications to the area are good. North Street connects with the A12 main arterial route to the North, which in turn provides a direct connection with the M25 (Junction 28) to the east and with Central London and Docklands areas to the south-west. The A12 also provides a connection with the A406 (North Circular Road), to the West, which in turn provides access to the M11

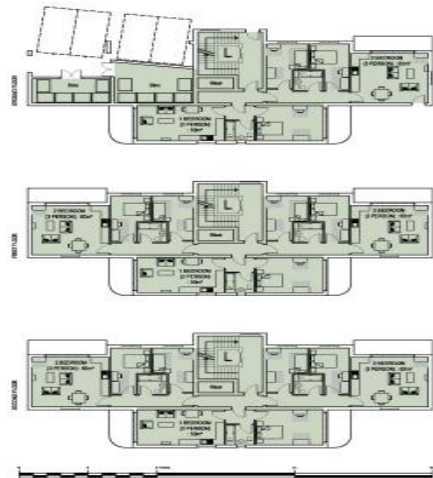
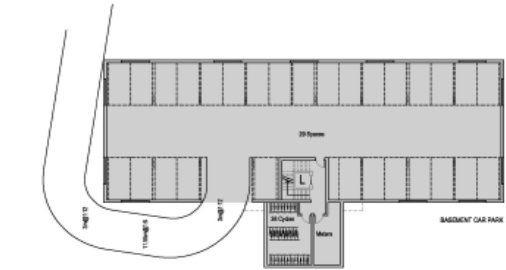
Price

POA





BLOCK B FLOOR PLANS
3166 NORTH STREET, ROMFORD, ESSEX, RM1 1ES



BLOCK A FLOOR PLANS
NORTH STREET, ROMFORD, ESSEX, RM1 1ES

