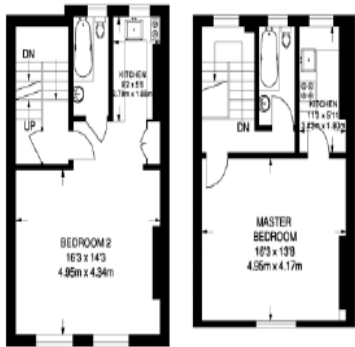




10 Bedroom House

FOR SALE

Wyndham Street, Portman Estate, W1H



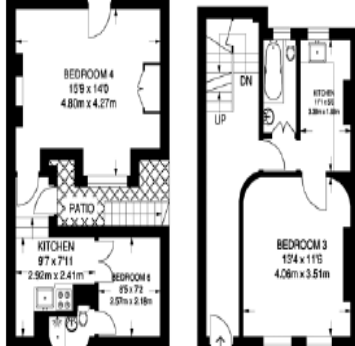
SECOND FLOOR
440 SQ FT / 40.9 SQ M

THIRD FLOOR
413 SQ FT / 38.4 SQ M



RAISED GROUND FLOOR
257 SQ FT / 23.9 SQ M

FIRST FLOOR
145 SQ FT / 13.5 SQ M



LOWER GROUND FLOOR
857 SQ FT / 78.6 SQ M

GROUND FLOOR
428 SQ FT / 39.6 SQ M

Description

Boasting a desirable location in the heart of Marylebone this fantastic ten bedroom

house offers a superb opportunity to purchase six separate flats.

Key Features

- Fabulous ten bedroom house over four floors
- Elegant Grade 2 listed building with ideal location
- Offers six separate flats with bright décor

Local Area

The property is located close to the shops, restaurants and bars of Marylebone Road, while the green open spaces of Regent's Park are also close by and offer a great outdoor space for walking and recreation.

Marylebone

Rail, Zone 1

Marylebone

Bakerloo line, Zone 1

Edgware Road

Circle, district, and Hammersmith & City Lines, Zone 1

Price

£3,150,000 Freehold

