



10 Bedroom Building

FOR SALE

Prince of Wales Terrace, Kensington, W8



Description

Offering a unique opportunity to modernise and personalise a substantial, six floor property in Kensington. The building is currently arranged with both self-contained hotel rooms with kitchens and private residences.

Location

Prince of Wales Terrace is a picturesque period terrace offering ideal access to both the rolling lawns of Hyde Park and Kensington Palace while the many shops and restaurants available along Kensington High Street are a moment's walk away.

Key Features

- Expansive six floor period property offering ten bedrooms
- High Ceilings and period features throughout
- Opportunity to modernise
- Ample storage with vaults
- Ideal location within the heart of Kensington
- Currently operating as a hotel
- Fantastic investment opportunity in a prime location



Tenure

Freehold

Local Authority

The Royal Borough of Kensington and Chelsea

Council Tax

To be confirmed

Price

£17,500,000

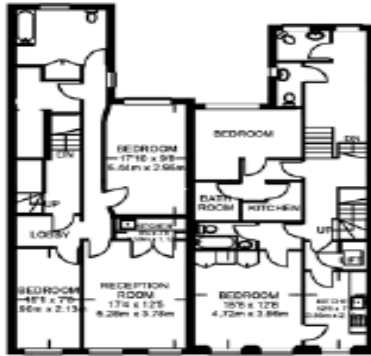


Energy Efficiency Rating		
	Current	Potential
Very energy efficient - lower running costs		
(92+)	A	
(81-91)	B	
(69-80)	C	75
(55-68)	D	
(39-54)	E	44
(21-38)	F	
(1-20)	G	
Not energy efficient - higher running costs		
England & Wales		

Environmental Impact (CO ₂) Rating		
	Current	Potential
Very environmentally friendly - lower CO ₂ emissions		
(92+)	A	
(81-91)	B	
(69-80)	C	
(55-68)	D	66
(39-54)	E	
(21-38)	F	34
(1-20)	G	
Not environmentally friendly - higher CO ₂ emissions		
England & Wales		



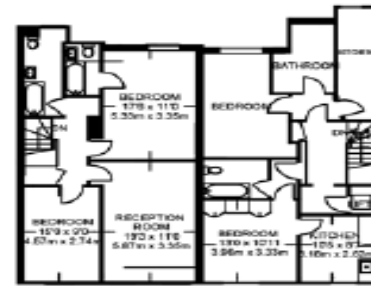
— | — = Reduced headroom below 1.5 m / 5'0"



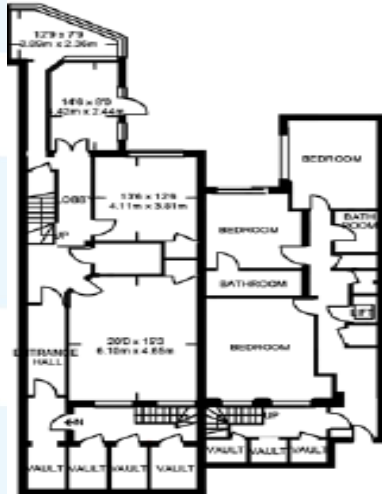
SECOND FLOOR (EXCLUDING LIFT)
967 SQ FT / 89.8 SQ M 928 SQ FT / 86.2 SQ M
TOTAL 1895 SQ FT / 176.0 SQ M



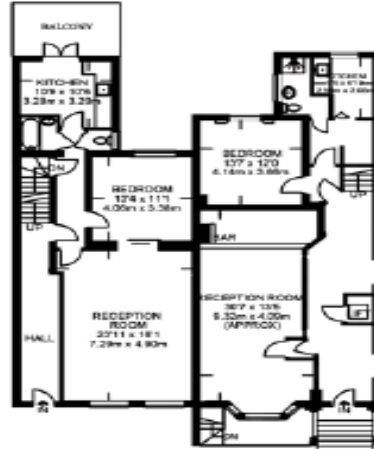
THIRD FLOOR (EXCLUDING LIFT)
864 SQ FT / 80.3 SQ M 846 SQ FT / 78.6 SQ M
TOTAL 1710 SQ FT / 158.9 SQ M



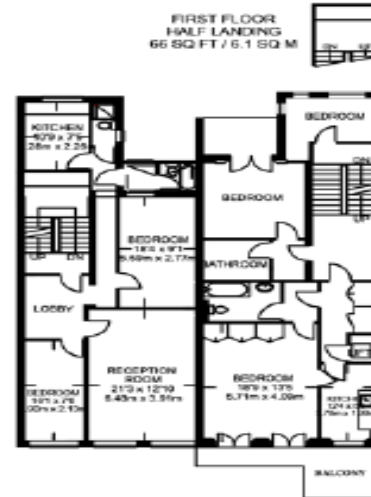
FOURTH FLOOR (EXCLUDING LIFT)
770 SQ FT / 72.4 SQ M 804 SQ FT / 74.7 SQ M
TOTAL 1583 SQ FT / 147.1 SQ M



BASEMENT
(EXCLUDING VAULT & LIFT)
1165 SQ FT / 108.2 SQ M 848 SQ FT / 78.8 SQ M
TOTAL 2013 SQ FT / 187.0 SQ M



GROUND FLOOR (EXCLUDING LIFT)
971 SQ FT / 90.2 SQ M 1058 SQ FT / 98.1 SQ M
TOTAL 2027 SQ FT / 188.3 SQ M



FIRST FLOOR (EXCLUDING LIFT)
1017 SQ FT / 94.5 SQ M 1045 SQ FT / 97.1 SQ M
TOTAL 2082 SQ FT / 191.6 SQ M

(LEFT HAND PROPERTY)
APPROXIMATE GROSS INTERNAL AREA
5627 SQ FT / 513.5 SQ M

(RIGHT HAND PROPERTY)
APPROXIMATE GROSS INTERNAL AREA
(INCLUDING BASEMENT & EXCLUDING VAULT)
5829 SQ FT / 541.5 SQ M
VAULT = 130 SQ FT / 12.1 SQ M